



EvokeTechnologies™

Corporate Presentation

© 2011 Evoke Technologies. All rights reserved.





Agenda

- Overview**
- Technology Expertise**
- Process**
- Engagement Models**
- Partnerships**
- Few Clientele**





EvokeTechnologies™

Overview

- Established in the year 2003**
- CMMI Level 3 company, STPI Registered**
- Headquartered at Dayton, OH**
- ODC in Hyderabad, India**
- Emerged from an Outsourcing Company to a Strategic Partner**
- Consistent Financial performance**





EvokeTechnologies™

Technology Expertise

- ❑ Microsoft - .Net, SharePoint, ASP, VB, MS SQL server, WWF, WPF, SSRS, SSIS
- ❑ Java / J2EE, Hibernate, Spring, Struts, Documentum, Flex, Oracle
- ❑ DWH - ETLs - Informatica, BI -Business Objects
- ❑ ERP's- Oracle E-Business Suite & JD Edwards Enterprise One
- ❑ QA - QTP - Automation, QC - Manual, Load Runner, Gomez, BMC, ERP Testing

ORACLE
Data Warehousing
Web Logic
Business Intelligence
ERP

Microsoft
GOLD CERTIFIED
Partner


Microsoft
Office SharePoint
Server 2007


Java


Business Objects


Salesforce™

JD Edwards
Enterprise Software




MySQL


LIFERAY
Enterprise. Open Source. For Life.


AJAX
Asynchronous Javascript And XML


Fx





Microsoft Technologies

- ❑ Built and maintaining applications using . Net (C#, VB.Net, Asp. Net), VB, ASP for the customers like Clopay, CSC(Corporate Domain Services, Diligence)
- ❑ Migrated complex VB, ASP applications to .Net and deployed successfully without any downtime to the existing manufacturing process
- ❑ Migrating Crystal reports to SSRS saving the customer on crystal reports license
- ❑ Developed BI for UCC searches using SSIS, SSRS for CSC using Business Intelligence Development Studio to design, package and deploy
- ❑ Deployed SharePoint intranet portal as one-stop-shop throughout the enterprise

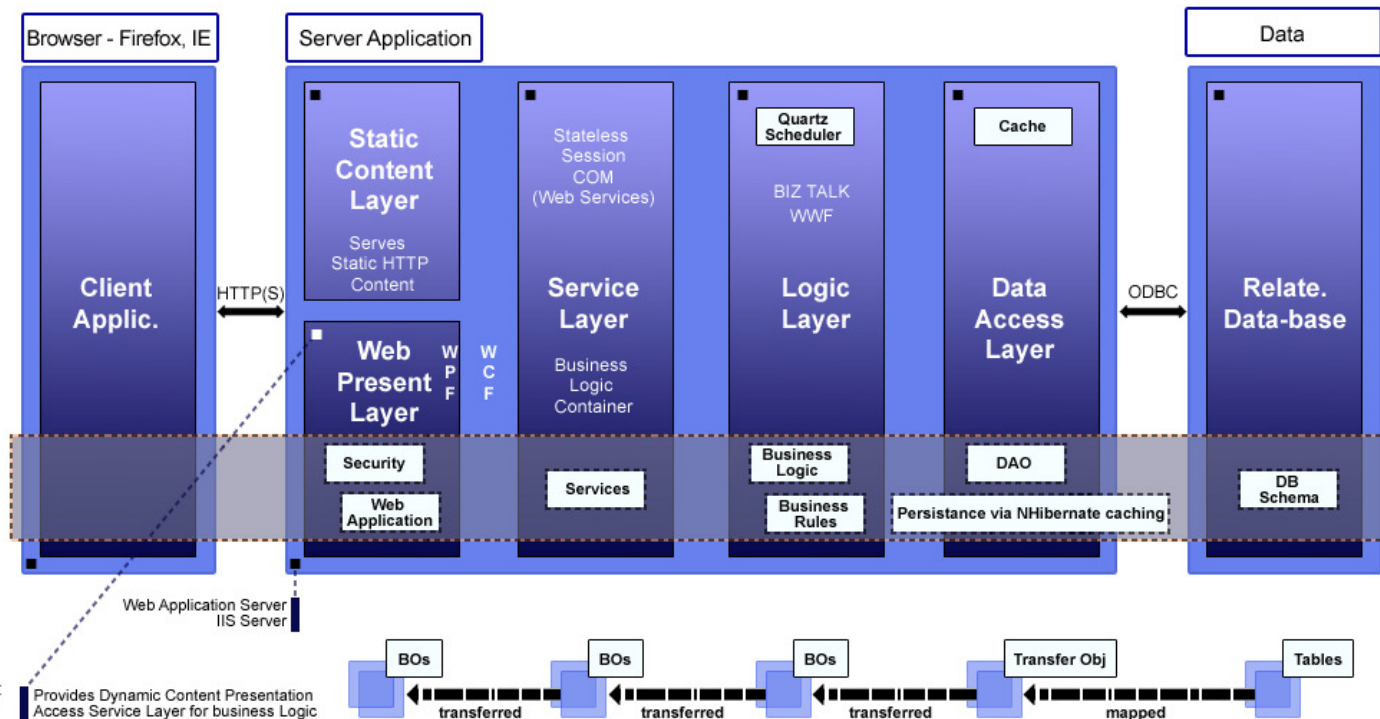




Microsoft Technologies

Evoke - Differentiation

- ❑ Built applications with higher performance and scalability using MVC architectures
Used n-Hibernate extensively for data Persistency in Data access layers
Ajax usage on the client side for RIAs
- ❑ Experience with WPF, Silver light to enhance the user experience. Developed applications using BIZTALK and WWF for heavy and light weight business processing flows respectively





Microsoft - Case Studies

Case Study - Migration

Migrated the existing applications on VB to .Net Environment without any functional, look and feel changes bringing additional value to the application. This has resulted in huge control on investment for training of resources on both technology and functional. The newly developed app was deployed on to the manufacturing process with out any downtime by closely monitored thorough prior testing

The apps interacting with PLC's were migrated from client server architecture to n-Tier architectures to leverage the technology benefits

Case Study - Acquisition Integration

When CSC took over Register.com Corporate domains business, we have moved on to 3 locations London, Germany for KT and successfully integrated with CSC applications. We also moved the entire application off shore reducing the costs for customer.





J2EE

- Developed and maintaining web applications(Entity Management) using MVC web frameworks with Struts, Hibernate and Spring MVC**
- Built SAAS based Matter management, eBoard for Law firms and Corporate governance with real time experience on managing heavily loaded SAAS applications(load balancing) and cloud computing**
- Worked with different application servers like - Web Logic, JBOSS, Web sphere and integration of various applications built on these platforms**
- Extensive experience in designing RIAs using Adobe Flex, DWR, DOJO and several other AJAX frameworks**
- Experience in developing applications using ILOG, JViews for Organizational Charts, generating business reports using Jasper Reports**
- Experience in integrating applications with third party apps using web service API's like Documentum, BO, Lucene**

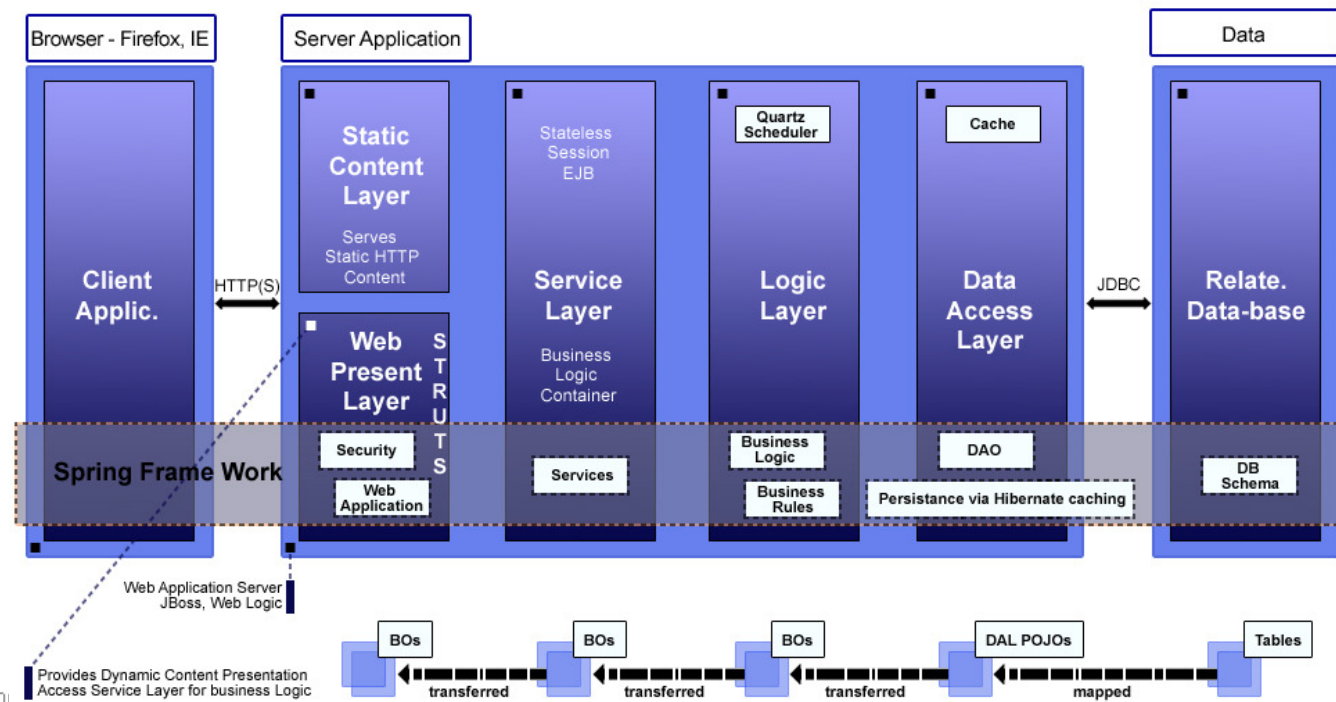




J2EE

Evoke - Differentiation

- ❑ Using ORM tool Hibernate for persistence layer in combination with different 2nd level cache frameworks like EhCache, Jboss Tree Cache, Memached and an appropriate usage of query caching and different caching strategies provided by Hibernate
- ❑ Using Spring framework for wiring very complex applications with loosely coupled designs that are “Open for Extension and Closed for Modification”





J2EE – Case Studies

Case Study - eBoard Room

Corporates with their growing business and looking for a better collaboration with board members and directors require a tool having collaborative workspace with file cabinet/membership applications, browser based document import/storage function. eBoard Room is a secure, online workspace used to electronically manage board book documents, meeting status, communications and private document storage. Authorized users can access the boardroom work areas and documents anytime, anywhere

Case Study - Matter Management

Customer is a leading document management services. Law firms with their growing business and looking for a better collaboration with other departments and vendors, our client reaped the opportunity to build a solution that fulfills the need of companies and the law firms to manage the documents related to the lawsuits. The application was build around data management solution of legal matter management, e-billing and documents. We developed an application that would allow for a seamless workflow between matter management, document management and e-billing system.



EvokeTechnologies™

Data Warehouse & Business Intelligence

- Our specialty is “highly scalable ETLs” using both manual and automated tools**
- Created Universe design using BO Universe Designer to generate custom reports by client through BO Webi, Deski**
- Experience on DB system performance tuning using highly tuned materialized queries and Views**
- Implemented Complex/Graphical reports using various BO Universe**
- Drilling, slicing and dicing features extensively used**
- Worked extensively on Cubes and MetaData**





ERP Expertise

- ❑ **Customized and maintain the ERP systems like Oracle eBusiness suite, JD Edwards in manufacturing, Distribution and corporate Governance domain**
- ❑ **Extensive experience in implementing and supporting Financials, SCM, iProcurement, HRMS, Manufacturing, iStores**
- ❑ **Implemented Service Contracts and Advanced Pricing in Oracle CRM**
- ❑ **Daily activities include issue resolution like financial transactions reconciliation and balancing, Incomplete orders ...etc on both JDEdwards and Oracle eBusiness Suite**
- ❑ **Prepared the process documentation which involves the regular processes like entering sales order, receiving a PO item, printing invoices....etc, Minimizing the Class room training time for new users**





EvokeTechnologies™

ERP Case Studies

Case Study - Centralized Barcode Printing System

This involved a custom application interfaced with third party OPTIO. UBE runs every night on scheduler generating PDF the warehouse number, printer IP and number of labels to be printed. PDF was automatically picked up by OPTIO print server printing on Zebra printers at the destined warehouse reducing the time and shipping expenses

Case Study - Centralized Inventory and Purchasing System

Established region wise, three centralized warehouses to handle the inventory transactions and purchasing for 15 branch plants spread across North America. De-duped the items based on their configuration and entered into JDE system bringing the items into visibility and availability

The project was a huge success which saved the company about 10 million dollars right away and reduced future unnecessary purchasing





Quality

- ❑ **Implemented all steps in Manual Testing predominantly using QC (Test Artifacts, Test Case Management, Defect Management, Release Management and reports) for Domain Management**
- ❑ **Successfully proposed and delivered automation practices in terms of Automation framework, scripting standards, library functions, scenario identification, test suite, execution report and metrics (QTP)**
- ❑ **Have experience in BAC (Business Availability Center) using Gomez and BMC from internal and external to the systems for many SAAS Applications built**
- ❑ **E2E QA practices for Oracle Apps for modules Financial, Supply Chain and HR in eBusiness suite R12 in Retail and Manufacturing domain**
- ❑ **Daily Activities include Functional, Technical, Patches and archiving Testing Implementing process documentation for QA practices for effective control, monitoring and reporting**





QA – Quality and Assurance

- Manual Testing – QC (Test Artifacts, Test Case Management, Defect Management, Release Management and Reports)**
- Load Runner**
- Automation - QTP**
- Availability – Gomez, BMC**
- Selenium**
- ERP Testing**





EvokeTechnologies™

Quality Case Studies

Case Study - Domain Manager

There were nearly 10,000 test cases which need to be verified for every major release. Hence, for Domain Manager application proposed to migrate the base lined features and test cases to QTP based Automation for

**BAT Suite
Regression Suite
Sanity**

The above suite runs on demand and with every build deployment, thereby assuring the quality software in time.





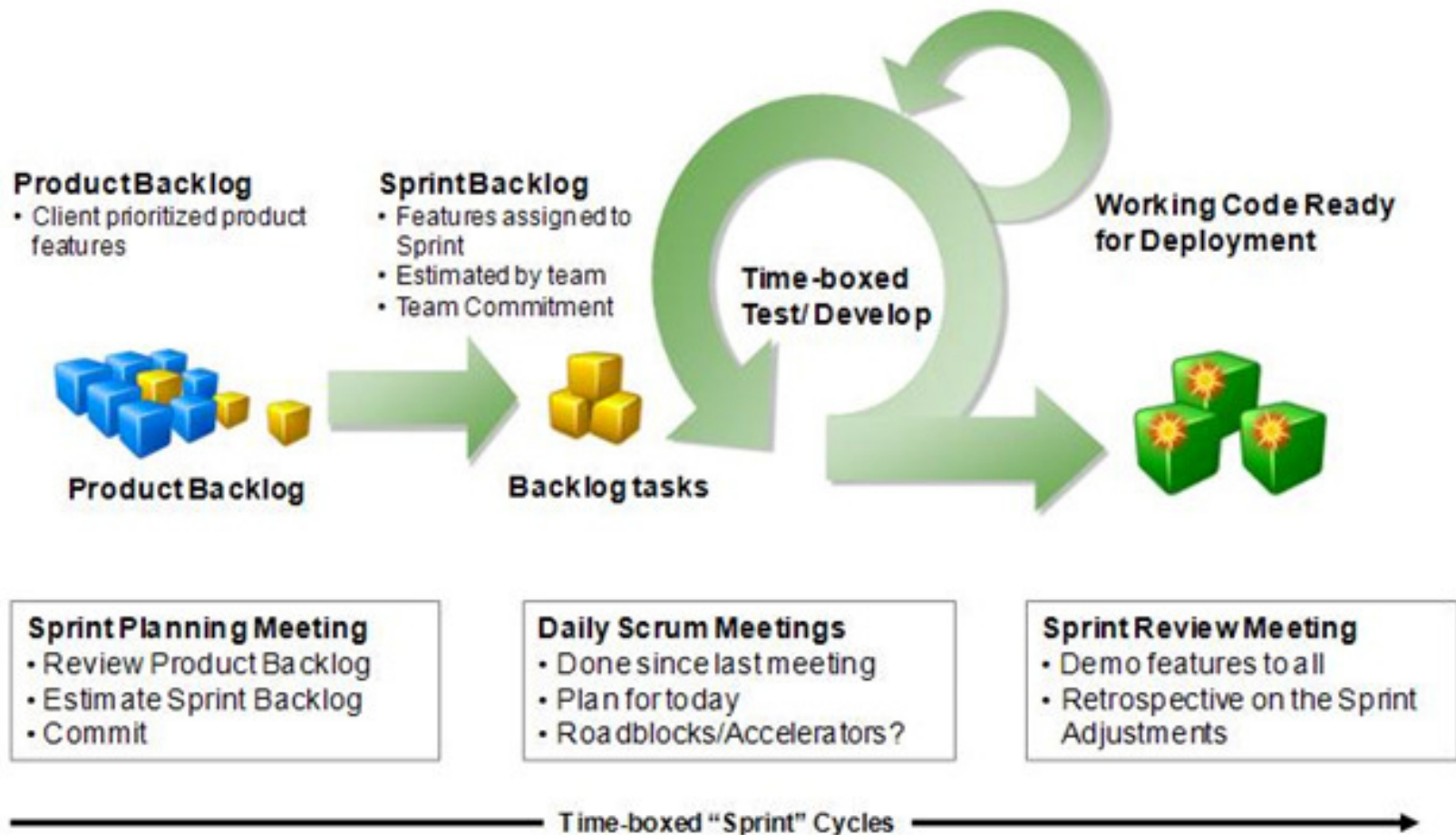
Process

- Agile Development**
- Maintenance Methodology**
- Engagement Process**
- Tools**



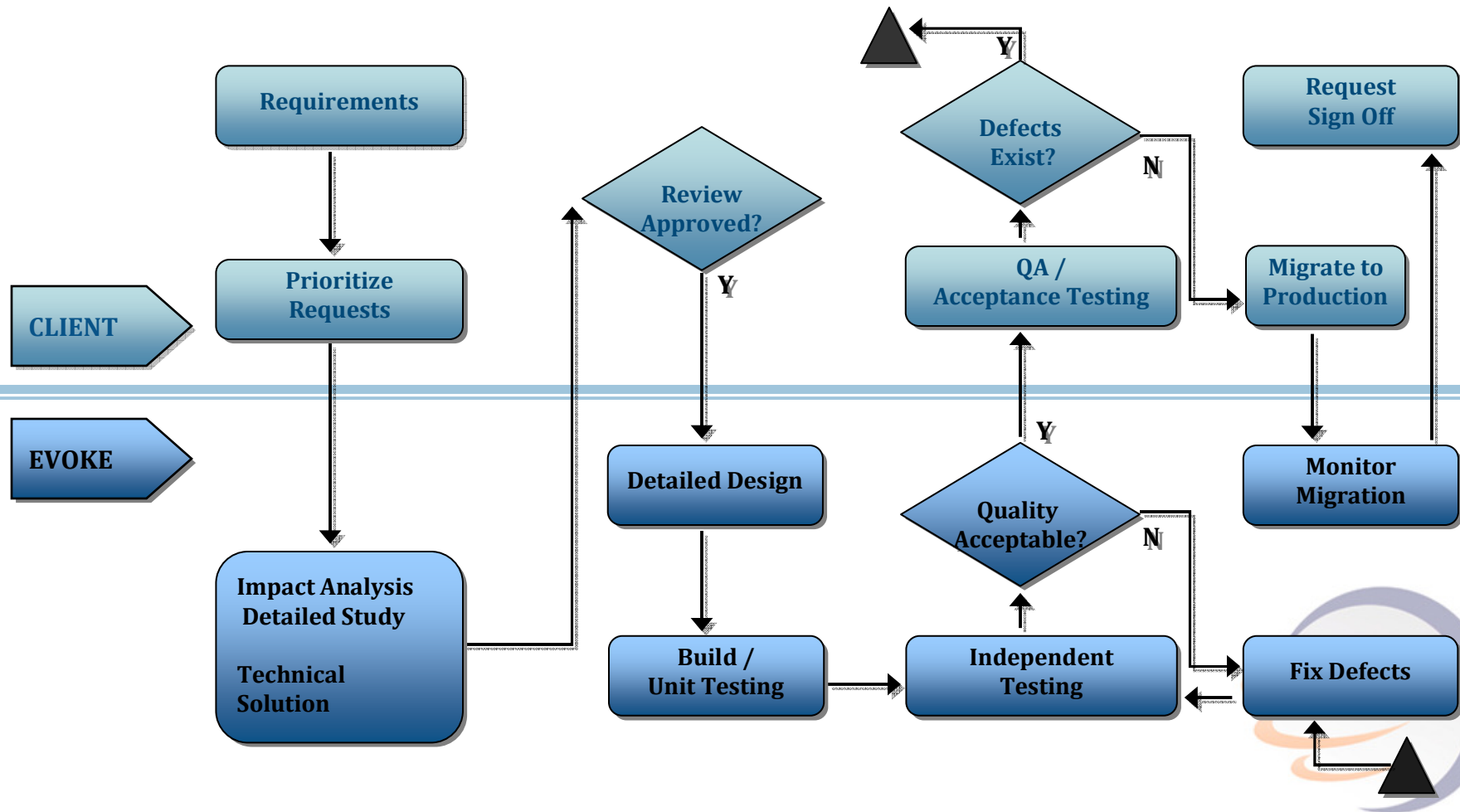


Agile / Scrum Overview



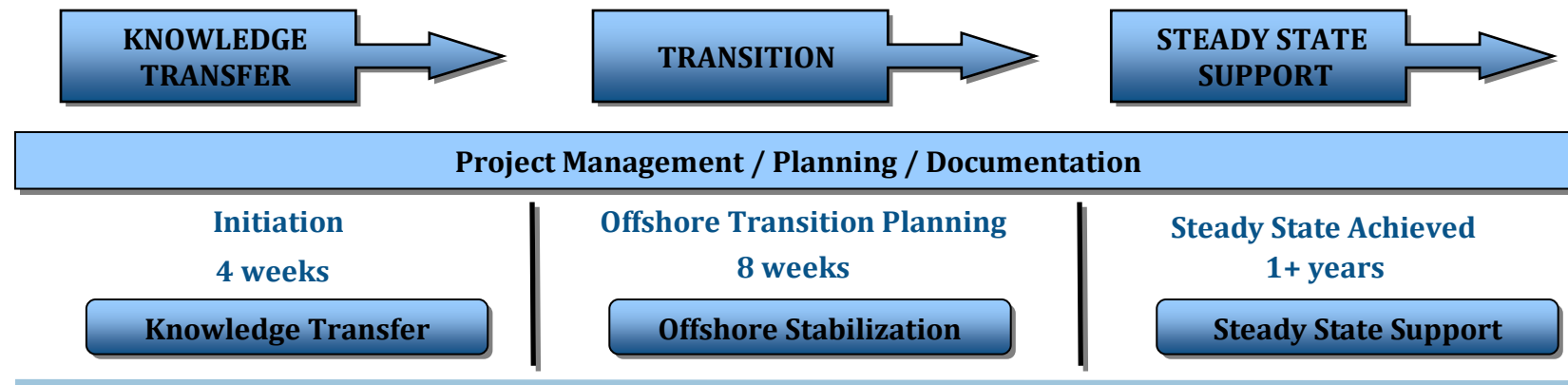


Maintenance Methodology





Engagement Process



Project Kick-Off Meeting

- Organizational structure
- Roles & Responsibilities
- Plan for Knowledge Transfer
- Plan for transition

Knowledge Transfer

- Transfer & Review of existing documentation (SRS & SDD)
- Domain Knowledge Transfer
- Setup Development environment
- Transfer of source code
- Technical Knowledge Transfer
- Review of Knowledge Transfer

Transition

- **Phase - I**
 - Evoke as Secondary support
 - Offshore environment setup
- **Phase - II**
 - Evoke as Primary support
 - Offshore work initiation
 - Simulated work flows

Steady State

- Execution of all work requests
- Manage complete operations
- Project Reporting





Tools

- ❑ **Side Bar / Version One / Kayako**
 - **Weekly Metrics/ Work logs Report**
 - **Side Bar Tool for Ticketing and Bug Tracking**
 - **Version One for SCRUM Process Management**





Engagement Models

- Onsite**
- Off shore**
- Hybrid**
- BOT - Build Operate and Transfer**
- ADM**
- AMO**





EvokeTechnologies™

Partnerships

Microsoft™
GOLD CERTIFIED
Partner

Business Intelligence
Data Management Solutions
SOA and Business Process
Mobility Solutions

Microsoft.
Small Business
Specialist





EvokeTechnologies™

Few Clientele





EvokeTechnologies™

Thanks

Contact Us

email : info@evoketechnologies.com

Ph No : +1 (302) 269 0340

+91-40-6650 9000

